

PRODUCT CATALOGUE



Premier
Lockers

AUSTRALIA'S LOCKER SPECIALIST



STEELCO **5MM RANGE** NEW

The Steelco 5mm Range has been designed for the modern workplace. With a sleeker 5mm carcass, the 5mm range will stand out in any modern office environment.

5mm Range currently in stock, see page 6 for all models.

- ▶ Range of furniture options
- ▶ 5mm slim carcass
- ▶ Laminate timber doors
- ▶ Quality powder coated finish

Product Range: Our 5mm Range has a diverse range of furniture options including office pedestals, cabinets, lockers, and filing cabinets.

Size Modifications: If our standard sizes do not suit your needs, a customised unit can be designed.

Minimal Design: Designed with a sleek 5mm carcass, the 5mm Range is ideal for office environments where space is at a premium.



ACCESSORIES

Steelco's 5mm Range can be fitted with a range of accessories to enhance the usability and offer more features to users. See below for a list of available accessories:

- Planter Box
- Handles and Locks
- Acoustic Back Panels
- Pin Board Back Panels
- Laminex and Polytec Board

STOCK COLOURS

		
WHITE SATIN	NATURAL BEECH	Black
Powdercoated Steel	Laminate Board	Perforated Steel

Custom colours available on request, contact your local sales representative for more information.



TECHNICAL SPECIFICATION

Standard Sizes (mm)

Modular Range

3 Tier Cabinet - 2 Open Shelf - 1 Door - 1200H x 800W x 450D (Laminate/Steel)

3 Tier Cabinet - 2 Open Shelf - 1 Door - 1200H x 800W x 450D (Steel)

3 Tier Cabinet - 1 Open Shelf - 2 Door - 1200H x 800W x 450D (Laminate/Steel)

3 Tier Cabinet - 1 Open Shelf - 2 Door - 1200H x 800W x 450D (Steel)

2 Tier Cabinet - 1 Open Shelf - 1200H x 800W x 450D (Laminate/Steel)

2 Tier Cabinet - 1 Open Shelf - 1200H x 800W x 450D (Steel)

2 Tier Cabinet - 1 Open Shelf - 1 Door - 800H x 800W x 450D (Laminate/Steel)

2 Tier Cabinet - 1 Open Shelf - 1 Door - 800H x 800W x 450D (Steel)

1 Tier Top Cupboard - 1200H x 800W x 450D (Laminate/Steel)

1 Tier Top Cupboard - 1200H x 800W x 450D (Steel)

1 Tier Ground Cupboard - 800H x 800W x 450D (Laminate/Steel)

1 Tier Ground Cupboard - 800H x 800W x 450D (Steel)

Units can be stacked in different arrangements to suit your preference (ie. 2 Shelf Cabinet with door topped by a 1 shelf open cabinet).





STEELCO VERTICAL FILING CABINET

Steelco Vertical Filing Cabinets have been created specifically for commercial use and are ideal for high volume storage where floor storage space is restricted.

- ▶ Recessed Handle
- ▶ Heavy-duty double extension ball bearing runners
- ▶ Anti-tilt mechanism installed
- ▶ Drawer fronts include full-length label holder for easy identification
- ▶ Fitted with barrel exchange locks
- ▶ 35kg drawer capacity uniformly distributed load

AFRDI Certified: Steelco Vertical filing Cabinets have been Blue Tick AFRDI approved, Reference #13409/2.

Colours: Individual units and even individual drawers can be custom painted to different colours.

Recessed Handle: The recessed handle provides a large opening for your hand, allowing simple and smooth opening and closing of the drawers.

VFC Planter Box: An optional accessory brings life to any space, allowing some natural plant life to seamlessly fit into your workspace.



TECHNICAL SPECIFICATION

Standard Sizes (mm)

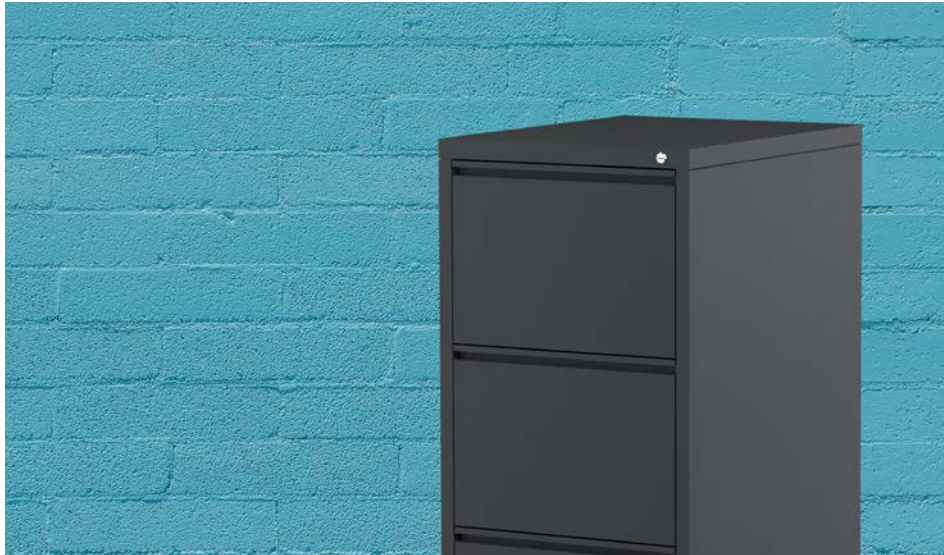
- 2 Drawer - 710H x 470W x 620D
- 3 Drawer - 1015H x 470W x 620D
- 4 Drawer - 1320H x 470W x 620D

LOCKING MECHANISM

- Key Lock (Standard)
- Digital Lock

STOCK COLOURS

- | | | |
|---------------|-------------------|---------------|
| ■ Silver Grey | □ White Satin | ■ Black Satin |
| ■ Beige | ■ Graphite Ripple | |



VERTICAL FILING CABINET

Mercury Filing Cabinets have been created specifically for the storage of high volumes of filing. Perfect for any work environment.

- ▶ T-Handle Drawer System
- ▶ Heavy-duty double extension ball bearing runners
- ▶ Anti-tilt mechanism installed Label holder included
- ▶ Fitted with barrel exchange locks
- ▶ 30kg drawer capacity

AFRDI Certified: Mercury Vertical Filing Cabinets have been Blue Tick AFRDI approved, Reference #13409/1.

Colours: Individual units and even individual drawers can be custom painted to different colours.

T-Handle: The T-handle provides a large opening for your hand, allowing simple and smooth opening and closing of the drawers.

NEW VFC Planter Box: An optional accessory brings life to any space, allowing some natural plant life to seamlessly fit into your workspace.

TECHNICAL SPECIFICATION

Standard Sizes (mm)

- 2 Drawer - 710H x 470W x 620D
- 3 Drawer - 1015H x 470W x 620D
- 4 Drawer - 1320H x 470W x 620D

LOCKING MECHANISM

- Key Lock (Standard)
- Digital Lock

STOCK COLOURS

- | | |
|---------------|-------------------|
| ■ Silver Grey | □ White Satin |
| ■ Black Satin | ■ Graphite Ripple |



STEELCO LATERAL FILING CABINET

Steelco Lateral Filing Cabinets are durable and designed for storing high volumes of suspension filing. These lockable cabinets feature an anti-tilt safety mechanism and heavy-duty double extension runners.

- ▶ Anti-tilt mechanism installed
- ▶ Full-extension ball bearing runners
- ▶ Adjustable interior leveling feet
- ▶ 60kg UDL drawer capacity
- ▶ Quality powder coated finish
- ▶ 10-year product warranty

Anti-Tilt Mechanism: These units are fitted with an anti-tilt mechanism, allowing only one drawer to open at a time for safety purposes. Due to the weight of the product, a counterweight has also been installed for added stability.

AFRDI Certified: Steelco Lateral Filing Cabinets have been Blue Tick AFRDI approved, Reference #14533/1.

Colours: Individual units and even individual drawers can be custom painted different colours to brighten up any room.



TECHNICAL SPECIFICATION

Standard Sizes (mm)

- 2 Drawer - 710H x 915W x 463D
- 3 Drawer - 1015H x 915W x 463D
- 4 Drawer - 1320H x 915W x 463D
- 4 Drawer + Flipper - 1770H x 915W x 463D

LOCKING MECHANISM

- Key Lock (Standard)
- Digital Lock

STOCK COLOURS

- | | |
|-------------------|---|
| ■ Silver Grey | □ White Satin |
| ■ Graphite Ripple | ■ Black Satin (Not available for Flipper) |



STEELCO HEAVY DUTY SCHOOL LOCKER

Heavy Duty School Lockers are designed to withstand impact and robust usage. The carcass is made from double-skinned thick doors, making them an ideal storage unit for schools and colleges. The locker features flush mounted doors with a 180-degree opening capability.

- ▶ Double skinned thick doors
- ▶ Nameplate insert available
- ▶ Ventilation slots in each locker
- ▶ Quality powder coated finish
- ▶ 10-year warranty

Size Modifications: Custom-sized lockers can be designed and manufactured to suit specific uses.

Banking: The Heavy Duty School Locker is easily joined (or banked) into a bank of two or three, increasing the stability of the locker system.

Colours: Individual units and even individual doors can be custom painted to different colours.



TECHNICAL SPECIFICATION

Standard Sizes (mm)

1830H x 385W x 580D

Standard Door Configurations

Three Door

LOCKING MECHANISM

For information about our lock options, and which locking mechanisms fit this locker, please go to page 38.

STOCK COLOURS (Two tone finish)

■ Light Grey Doors ■ Dark Grey Carcass



STEELCO STEEL LOCKER

Steelcos Steel Lockers offer a comprehensive range of robust steel lockers to suit any demanding conditions or environment. Designed and manufactured to the highest standards, the locker units are available in a variety sizes and powder coated finishes.

- ▶ Name plate insert available
- ▶ 180 degree opening capability
- ▶ Flush mounted doors



Size Modifications: Lockers can be designed to your size specifications.

Perforation Patterns: Unique patterns can be designed to fit in with your branding.

Acoustic Panels: Locker doors can be fitted with sound absorbing material to minimise noise in any environment.

Colours: Different colours can be applied to individual units or doors.

Power Options: Compartments can be fitted with GPO and USB outlets.

NEW Locker Shelf: A small shelf inside the locker unit to separate items.



TECHNICAL SPECIFICATION

Standard Sizes (mm)

1830H x 305W x 460D

1830H x 380W x 460D

Standard Door Configurations

One Door
Two Door

Three Door
Four Door

Six Door
Eight Door

Combo Door

LOCKING MECHANISM

For information about our lock options, and which locking mechanisms fit this locker, please go to page 38.

STOCK COLOURS

■ Silver Grey

□ White Satin (Combo Locker Only)



STEELCO

PHONE & KEYS LOCKER

With the growing use of mobile phones in everyday life, we provide an efficient storage option to securely and safely store a small array of items that are essential in this day and age such as mobile phones and keys.

- ▶ Nameplate insert available
- ▶ 180-degree opening capability
- ▶ Flush-mounted doors
- ▶ Quality powder coated finish
- ▶ 10-year warranty

TECHNICAL SPECIFICATION

Standard Sizes (mm)

30 Door - 940H x 900W x 225D
60 Door - 1810H x 900W x 225D

Size Modifications: Custom-sized lockers can be designed and manufactured to suit specific uses.

Colours: Individual units and even individual doors can be custom painted different colours.

Powered Options: Compartments can be fitted with GPO and USB outlets.

STOCK COLOUR (Carcass/Base)

■ Graphite Ripple

(Doors)

□ White Satin



STEELCO

LAPTOP LOCKER

Steelco Laptop Lockers provide a high-density storage option to safely and securely store your tablets and laptops. The laptop lockers are also available in powered options, transforming the lockers into a charging station.

- ▶ Nameplate insert available
- ▶ 180-degree opening capability
- ▶ Flush-mounted doors
- ▶ Quality powder coated finish

TECHNICAL SPECIFICATION

Standard Sizes (mm)

1830H x 380W x 460D

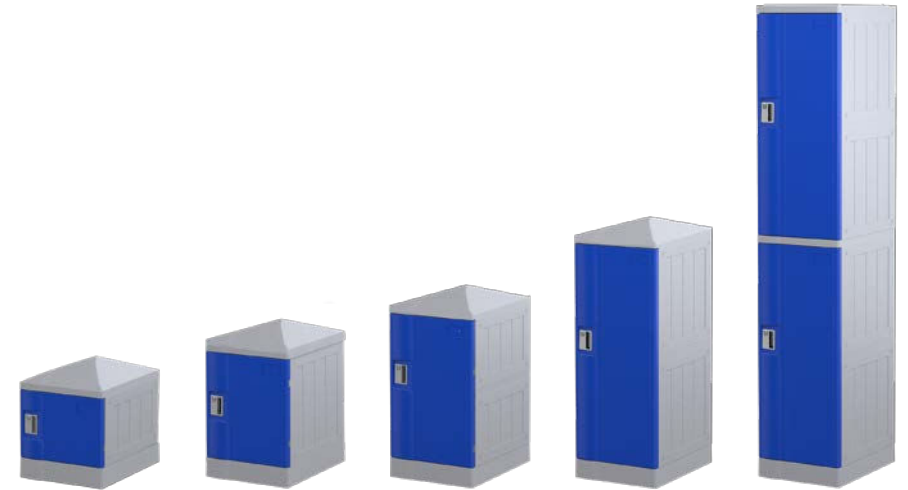
Size Modifications: Custom-sized lockers can be designed and manufactured to suit specific uses.

Colours: Individual units and even individual doors can be custom painted different colours.

Powered Options: Compartments can be fitted with GPO and USB outlets.

STOCK COLOUR

■ Silver Grey



STEELCO ABS PLASTIC LOCKER

The ABS (Acrylonitrile Butadiene Styrene) Plastic Locker is a strong, durable and colourful addition to any facility. The flexible design of the lockers allows a large array of customisation to suit your specific needs.

- ▶ Lightweight
- ▶ Adjustable shelves
- ▶ Water-resistant
- ▶ Scratch Resistant
- ▶ Eco-friendly/recyclable
- ▶ 5-year warranty

Size Modifications: With the different door sizes available, it is possible to combine the different sizes to build a unit that suits your requirements.

Sturdy and Strong: The locker doors have been tested to withstand a 1000kg force.

Water Resistant: The ABS lockers are water-resistant, making them the perfect addition to swimming pools and gym areas (amongst others).

TECHNICAL SPECIFICATION

Standard Sizes (mm)

Full Height - 1940H x 380W x 500D
 Half Height - 1010H x 380W x 500D
 Third Height - 700H x 380W x 500D

Quarter Height - 545H x 380W x 500D
 Sixth Height - 390H x 380W x 500D

Door Configurations Available

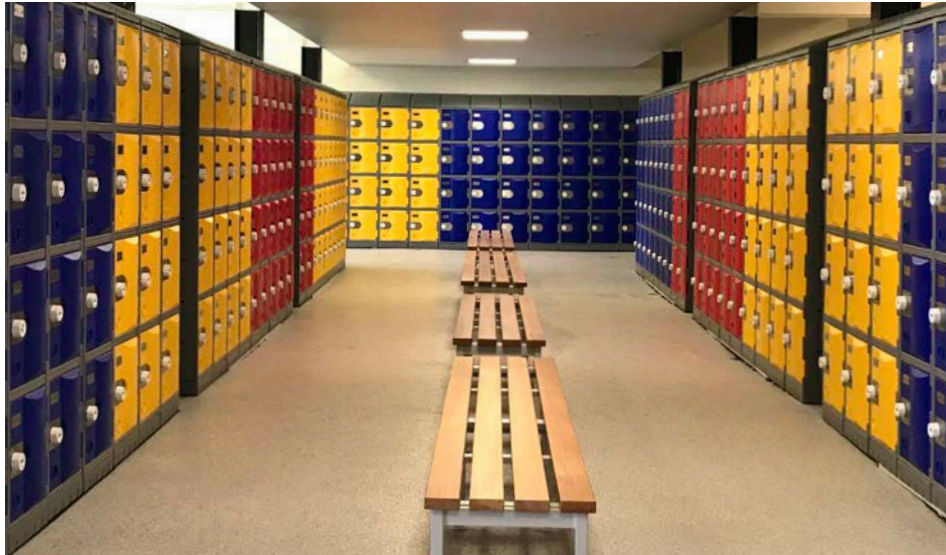
One Door	Three Door	Six Door
Two Door	Four Door	

LOCKING MECHANISM

For information about our lock options, and which locking mechanisms fit this locker, please go to page 38.

STOCK COLOUR

■ Blue	■ Yellow	■ Red	■ Green
--	--	--	--



STEELCO HEAVY DUTY PLASTIC LOCKER

Lockers that can outlast their use are hard to find. The Heavy Duty Plastic Lockers defy this idea. Designed to suit extensive use, these lockers are extremely strong making them the ideal addition to any school, fitness centre, or swimming pools (amongst other settings).

- ▶ Adjustable shelves
- ▶ Water-resistant
- ▶ UV proof
- ▶ Vandal-proof
- ▶ Easy to clean
- ▶ Low maintenance
- ▶ Eco-friendly/recyclable
- ▶ 20-year warranty

Size Modifications: With the different door sizes available, it is possible to combine the different sizes to build a unit that suits your requirements.

Water Resistant/ UV Proof: The Heavy Duty Lockers are water-resistant and UV proof, perfect for indoor and outdoor applications.

TECHNICAL SPECIFICATION

Standard Sizes (mm)

Full Height - 1800H x 385W x 500D
Half Height - 900H x 385W x 500D

Third Height - 600H x 385W x 500D
Quarter Height - 450H x 385W x 500D

Door Configurations Available

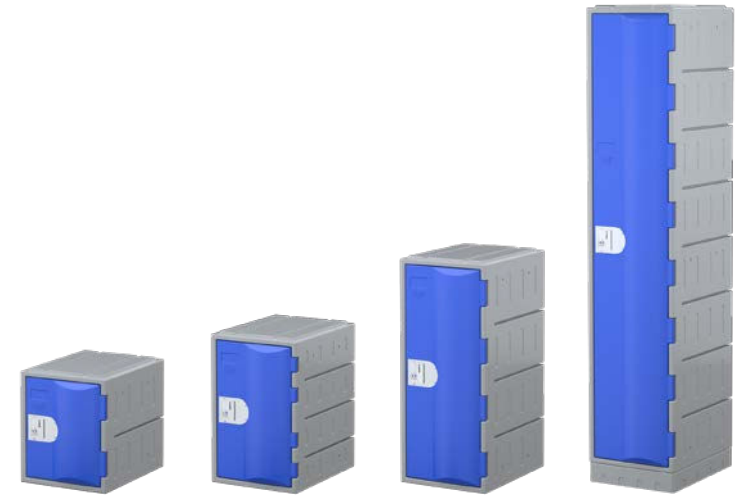
One Door	Three Door	Six Door
Two Door	Four Door	Eight Door

LOCKING MECHANISM

For information about our lock options, and which locking mechanisms fit this locker, please go to page 38.

STOCK COLOUR

■ Blue	■ Yellow	■ Red	■ Grey
--	--	--	--





STEELCO HD WATERPROOF PLASTIC LOCKER NEW

The ultimate outdoor locker. These Heavy Duty Waterproof Plastic Lockers are designed to suit most conditions, being water, UV and vandal proof. They are the perfect locker solution for any outdoor use in a school, fitness centre, or swimming pools (amongst other settings).

- ▶ Variety of door configurations
- ▶ Waterproof
- ▶ UV proof
- ▶ Vandal-proof
- ▶ Easy to clean
- ▶ Low maintenance
- ▶ Eco-friendly/recyclable
- ▶ 20-year warranty

Size Modifications: With the different door sizes available, it is possible to combine the different sizes to build a unit that suits your requirements.

Waterproof/ UV Proof: The Heavy Duty Lockers are waterproof and UV proof, making them the ideal solution for outdoor conditions.

*Lockers are waterproof in standard outdoor conditions. In adverse weather conditions, resulting in flooding or the units being submerged in water, the lockers will leak water. Please discuss this with your local BDM for further advice and recommendations.

TECHNICAL SPECIFICATION

Standard Sizes (mm)

Half Height - 910H x 390W x 500D (990H with 80mm base)
 Third Height - 610H x 390W x 500D (690H with 80mm base)
 Quarter Height - 460H x 390W x 500D (540H with 80mm base)

LOCKING MECHANISM

For information about our lock options, and which locking mechanisms fit this locker, please go to page 38.

COLOURS AVAILABLE (10-12 Week Lead Time)

(Carcass/Base)

■ Marble

(Doors)

■ Navy

■ Red

■ Coffee

■ Yellow

■ Green

■ Grey



STEELCO CAROUSEL LOCKER NEW

Perfect for any fast-paced, space-conscious area. The Carousel Locker is stable, durable and movable and suitable for both indoor and outdoor use. The locker sizes are all customisable, allowing you to configure the perfect unit for your needs.

- ▶ Stable, durable and movable
- ▶ Water-Resistant
- ▶ Vandal-proof
- ▶ Easy to clean
- ▶ Low maintenance
- ▶ Eco-friendly/recyclable
- ▶ 20-year warranty

Size Modifications: With the different door sizes available, it is possible to combine the different sizes to build a unit that suits your requirements.

Water Resistant: The Carousel Unit Lockers are water-resistant making it perfect for indoor and outdoor applications.

Accessories: A wide range of accessories is available to increase the functionality of the unit.

TECHNICAL SPECIFICATION

Standard Size (mm)

2200H x 1400W x 1400D (With Roof)

Door Configurations Available

1 Door 2 Door 3 Door 4 Door 6 Door 8 Door

LOCKING MECHANISM

For information about our lock options, and which locking mechanisms fit this locker, please go to page 38.

COLOURS AVAILABLE (10-12 Week Lead Time)

- | | | |
|--|--|---|
| ■ Navy | ■ Red | ■ Coffee |
| ■ Yellow | ■ Green | ■ Grey |



STEELCO LAMINATE LOCKER

Our Laminate Locker Range is designed to be of superior quality and workmanship. With quality lock options and serviceable seating arrangements available, you can brighten up your tired staff areas with classy colours and designs.

Lockers custom designed to suit your premises and design ideas, with all the latest upgrades: media docking stations, LED lighting, mi-fare access locks, ironing boards, with seating to match.

Flush-mounted doors with 180-degree opening capability.

Key lock as standard with additional locking mechanisms available.

Locker Carcass: Available in either 16mm MR Melamine or 16mm PVC Rigid board.

Locker Doors: Available in either 13mm Compact Laminate or 18mm Structural MR MDF.



TECHNICAL SPECIFICATION

Standard Sizes (mm)

1910H x 300W x 500D

1910H x 400W x 500D

Door Configurations Available

One Door
Two Door

Two Door Combo
Three Door

Four Door

LOCKING MECHANISM

For information about our lock options, and which locking mechanisms fit this locker, please go to page 38.

STOCK COLOURS

With various wood finishes and colours available, please contact your local sales representative to find the best fit for you.



STEELCO FLUSH FRONT LOCKER NEW

Steelco Flush Door Steel Lockers feature a design that includes a flush door closing mechanism. These lockers have been designed to fit into any modern commercial space, with a wide range of customisation options to make the units unique.

- ▶ Variety of door configurations
- ▶ Extra thick steel
- ▶ Anti-Vandal Hinge
- ▶ Flush Design Doors
- ▶ Optional GPO/USB Power
- ▶ Powder Coated Finish
- ▶ Eco-friendly/recyclable
- ▶ 10-year warranty

Flush-mounted doors with 180-degree opening capability.

Key lock as standard with additional locking mechanisms available.

Features an anti-vandal hinge design with a full length steel rod to keep lock secure.

With the different door sizes available, it is possible to combine the different sizes to build a unit that suits your requirements.



TECHNICAL SPECIFICATION

Standard Sizes (mm)

1890H x 400W x 500D

1200H x 400W x 500D

Door Configurations Available

One Door
Two Door

Three Door
Four Door

Six Door
Eight Door

LOCKING MECHANISM

For information about our lock options, and which locking mechanisms fit this locker, please go to page 38. Please reference 'Steel Lockers'.

STOCK COLOURS

☐ White Satin

☒ Black Satin



STEELCO MINI LOCKER NEW

The Steelco Mini Locker is ideal for your home or office environment, creating a space efficient storage solution. It has height adjustable shelves and mounting holes for attaching it to the wall. Includes a keylock system so the locker is secure.

- ▶ 2 Internal Adjustable Shelves
- ▶ Key Lock as Standard
- ▶ Louvre Ventilation Slots
- ▶ Wall Mounting Holes
- ▶ Magnetic Closing Mechanism
- ▶ Powder Coated Finish
- ▶ 20kg Shelf Capacity
- ▶ 10-year warranty

Adjustable internal shelves to adjust to your storage requirements.

Key lock as standard with additional locking mechanisms available.

Wall mounting holes pre-cut to make the locker more versatile to your needs.

Individual units and even individual doors can be custom painted different colours.



TECHNICAL SPECIFICATION

Standard Sizes (mm)

1080H x 350W x 460D

720H x 350W x 460D

Door Configurations Available

One Door

LOCKING MECHANISM

For information about our lock options, and which locking mechanisms fit this locker, please go to page 38. Please reference 'Steel Lockers'.

STOCK COLOURS

☐ White Satin ☒ Black Satin



STEELCO 6 DOOR MAIL LOCKER NEW

Steelco Steel Six Door Lockers are designed to securely store personal items of varying sizes. Designed to fit seamlessly into a workstation setup, the locker units come with combination locks and mail slots as standard.

- ▶ Mail Slot on Each Locker
- ▶ 180-degree opening capability
- ▶ Flush-mounted doors
- ▶ Quality powder coated finish
- ▶ 12mm Slim Edge for a Modern Look
- ▶ Combination Lock as Standard
- ▶ 10-year warranty

Mail Slot featured on each locker door do allow documents to be dropped into each locker as needed.

Combination Lock included on each locker unit as standard.

A wide range of accessories is available to increase the functionality of the unit.

TECHNICAL SPECIFICATION

Standard Sizes (mm)

1200H x 900W x 400D

Door Configurations Available

Six Door

LOCKING MECHANISM

For information about our lock options, and which locking mechanisms fit this locker, please go to page 38. Please reference 'Steel Lockers'.

STOCK COLOURS

☐ White Satin ☒ Black Satin



STEELCO HYBRID SCHOOL LOCKER NEW

The Steelco Hybrid School lockers are a tough working locker for the school environment. Designed with a smooth powder coated steel frame and anti-scratch laminate finish, they are the ideal education locker solution.

- ▶ Durable, Anti-Scratch Finish
- ▶ 180-degree opening capability
- ▶ Flush-mounted doors
- ▶ Quality powder coated finish
- ▶ Pad Latch Hasp as Standard
- ▶ Range of finishes and colours
- ▶ 10-year warranty

A wide range of wood finishes and colours and finishes available.

Pad latch hasp included on each locker unit as standard, perfect for the education environment.

A wide range of locker sizes and door configurations that can be combined to create your ideal locker fitout.

TECHNICAL SPECIFICATION

Door Configurations / Standard Sizes (mm)

- 9 Door (3H x 3W) - 1860H x 1075W x 580D
- 6 Door (2H x 3W) - 1860H x 1075W x 580D
- 6 Door (3H x 2W) - 1860H x 725W x 580D
- 4 Door (2H x 2W) - 1860H x 725W x 580D
- 3 Door (1H x 3W) - 970H x 1075W x 580D

LOCKING MECHANISM

For information about our lock options, and which locking mechanisms fit this locker, please go to page 38.

STOCK COLOURS

- ☐ White Satin
- ☒ Black Satin



LOCKING MECHANISMS

We provide a range of locking options that satisfy different levels of security required.

For the complete list of which lock category is compatible with each locker, please see the table below.

PRODUCT	KEY	PAD	RFID	DIG	COIN	COM	FIN
Heavy Duty Plastic Lockers	✓	✓	✓	✓	✓	✓	✓
Heavy Duty School Lockers		✓					
Steel Lockers	✓	✓	✓	✓	✓	✓	✓
Phone & Key Lockers	✓	✓	✓	✓	✓	✓	✓
Laptop Lockers	✓	✓	✓	✓	✓	✓	✓
ABS Plastic Lockers	✓	✓	✓	✓	✓	✓	✓
Laminate Locker	✓	✓	✓	✓		✓	✓
Carousel Locker	✓	✓	✓	✓		✓	
Heavy Duty Waterproof Lockers	✓	✓					

LEGEND

KEY: Key Lock

PAD: Padlatch

RFID: Radio Frequency Identification

DIG: Digital Lock

COIN: Coin Operated Lock

COM: 4 Digit Combination Lock

FIN: Finger Print Lock

COMBINATION LOCKS

Key Benefits:

- ▶ Keyless convenience
- ▶ User's set the lock's code
- ▶ Master key for emergency openings
- ▶ Probe to retrieve lost codes
- ▶ Up to 10,000 combinations

Our Recommendations:



CM-1
ABS Plastic Lockers



CM-17
HD Plastic Lockers
Laminated Lockers
Steel Lockers



CM-9525
Steel Lockers



To view our full range of Combination Locks please contact your local sales representative.

PUSH BUTTON LOCKS

Key Benefits:

- ▶ AA Battery compatible models
- ▶ User's set the lock's code
- ▶ Public or private modes
- ▶ LED lock indicator
- ▶ Millions of combinations

Our Recommendations:



PB-16
ABS Plastic Lockers



PB-19
HD Plastic Lockers
Laminated Lockers
Steel Lockers



RFPB-10
HD Plastic Lockers



To view our full range of Push Button Locks please contact your local sales representative.

TOUCH PAD LOCKS

Key Benefits:

- ▶ AA battery compatible models
- ▶ User's set the lock's code
- ▶ Keyless convenience
- ▶ Public or private mode
- ▶ Millions of combinations

Our Recommendations:



TP-21
HD Plastic Lockers



TP-1603
HD Plastic Lockers
Laminate Lockers
Steel Lockers



RFTP-1703
Laminate Lockers

To view our full range of Touch Pad Locks please contact your local sales representative.

RFID LOCKS

Key Benefits:

- ▶ AA Battery compatible models
- ▶ User's set the lock's code
- ▶ Public or private modes
- ▶ Keyless convenience
- ▶ Millions of combinations

Our Recommendations:



RF-780
Laminate Lockers



RF-5
HD Plastic Lockers
ABS Plastic Lockers

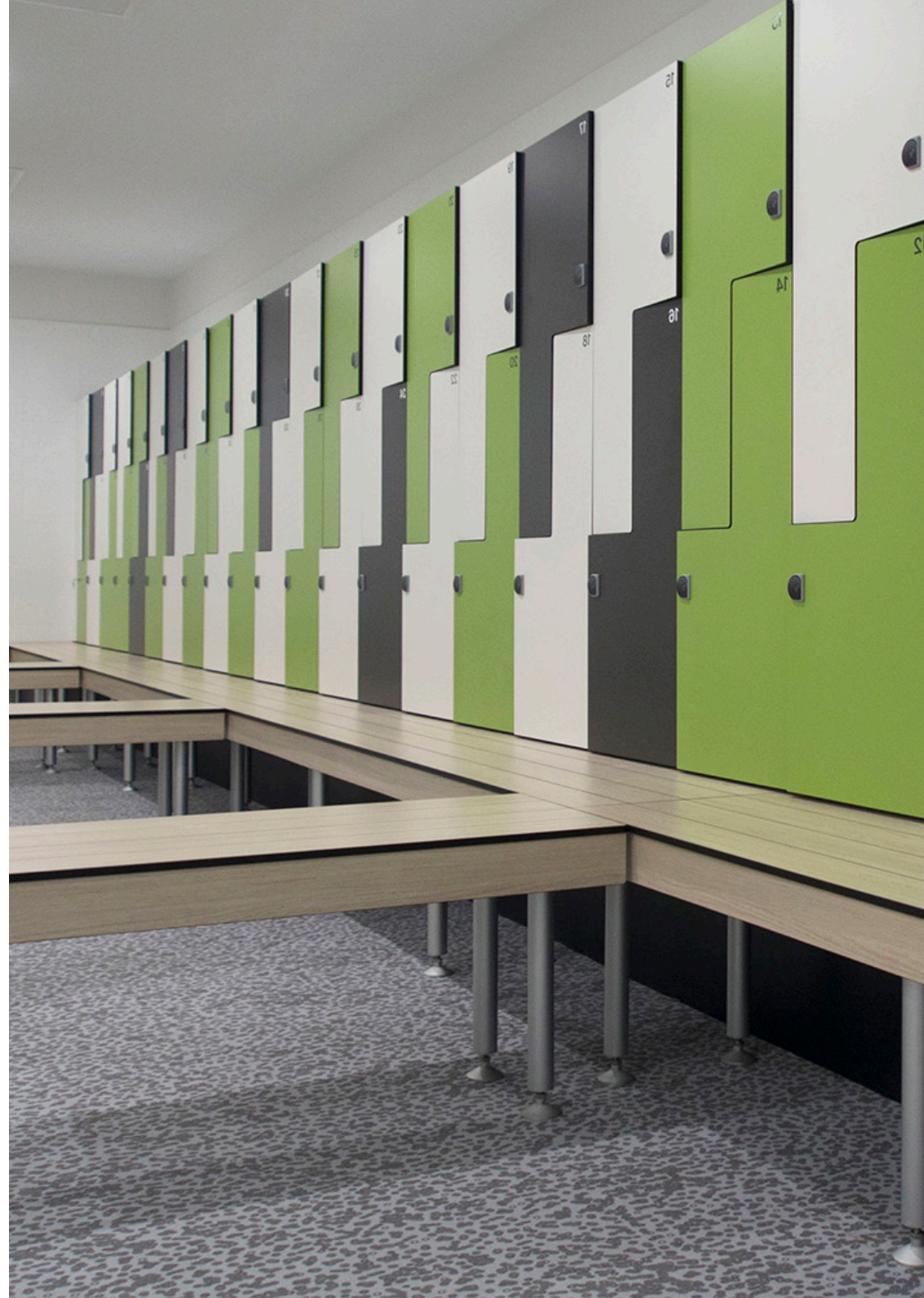


RFPB-10
Steel Lockers



RFTP-1703
Laminate Lockers

To view our full range of RFID Locks please contact your local sales representative.





STEELCO PERSONNEL WARDROBE

Steelcos Personnel Wardrobe offers a combination of hanging and shelf storage space. This product is ideal for storing personal items such as clothing, shoes, and helmets.

- ▶ Mirror fitted to the inside of the door
- ▶ Shelves are easily adjustable
- ▶ 180-degree opening capability

TECHNICAL SPECIFICATION

Standard Size (mm)

1830H x 914W x 463D

STOCK COLOURS

■ Silver Grey ■ Graphite Ripple

Ventilation Holes: Providing fresh air to the unit minimises odours that may arise from housing clothes within the wardrobe.

Interior Accessories: Designed to act as an all-purpose wardrobe, the unit is equipped with a mirror and hanging rail for clothes.



STEELCO LOCKER SEATING AND STANDS

Specifically designed for the Steelco Locker Range, the Steelco Locker Benches and Stands are the perfect solution to give your locker units more functionality.

TECHNICAL SPECIFICATION

Standard Size (mm)

Steel Stand and Benches

Single Locker Bench/Stand - 450H x 305W x 750D
 Single Locker Bench/Stand - 450H x 380W x 750D
 Single Locker Stand - 450H x 305W x 460D
 Single Locker Stand - 450H x 380W x 460D

Plastic Seating

ABS Plastic Bench - 450H x 1200W x 400D
 ABS Plastic Bench - 450H x 1900W x 400D

* Please note that other locker stands and seating options are available, please contact your local sales representative for more details.



STEELCO MOBILE PEDESTALS

When it comes to an individual employee's storage, mobile pedestals are the perfect option. These pedestals are a flexible desk storage solution that fits underneath the desk with ease while having a range of configurations that suit the specific requirements for more or less storage space.

- ▶ Anti-tilt mechanism installed
- ▶ Includes pencil tray
- ▶ Lockable castor wheels
- ▶ Quality powder coated finish
- ▶ 10-year warranty

Size Modifications: Custom-sized mobile pedestals can be designed and manufactured to suit any specific purposes.

Opening Capacity: The mobile pedestal range is fitted with full extension ball bearing runners, allowing full drawer access.

AFRDI Certified: The Steelco Classic and Line Ranges of Mobile Pedestals have achieved blue tick certification. Certificate #14103/1 and #13530/3.

Steelco Line Ranges of Mobile Pedestals have been Green Tick AFRDI approved, Reference #13590/2 and #13590/3.



TECHNICAL SPECIFICATION

Standard Sizes (mm)

Classic Range - 2 Box, 1 File Drawer - 630H x 470W x 515D
 Classic Range - 2 File Drawer - 630H x 470W x 515D
 Slimline Range - 2 Box, 1 File Drawer - 615H x 300W x 500D
 Trimline Range - 2 Box, 1 File Drawer - 615H x 390W x 500D

LOCKING MECHANISM

Key Lock
 Digital Lock

STOCK COLOURS

(Classic Range)

■ Silver Grey

□ White Satin

■ Graphite Ripple

(Line Range)

■ Satin Silver

□ White Satin

■ Black Satin



STEELCO HYBRID MOBILE PEDESTAL NEW

The Steelco Hybrid Pedestal is a sleek, modern mobile pedestal. Featuring a minimal 5mm steel carcass and wood-finish laminate front drawers, the Steelco Hybrid Pedestal fits seamlessly into any modern workplace while offering functional storage solution.

- ▶ Laminate drawer front
- ▶ Sleek 5mm Steel Carcass
- ▶ Includes pencil tray
- ▶ Lockable castor wheels
- ▶ Quality powder coated finish
- ▶ 10-year warranty

Sleek, Modern Design: Sleek, modern styling allows the Steelco Hybrid Pedestal to fit seamlessly into any modern office.

Custom Colours: A wide range of wood finishes and colours and finishes available. Contact your local sales representative for more details.

TECHNICAL SPECIFICATION

Standard Sizes (mm)

2 Box, 1 File Drawer - 615H x 390W x 500D

LOCKING MECHANISM

Key Lock

STOCK COLOURS

☐ White Satin ☒ Natural Beech



STEELCO MOBILE CADDY

The Steelco Trimline Mobile Caddy is ideal for under desk storage or as an extended workspace storage unit. This unit is available with either a tambour side door or as an open shelf side and features two box drawers and one suspension file drawer.

- ▶ Anti-tilt mechanism installed
- ▶ Includes pencil tray
- ▶ Lockable castors to secure the unit
- ▶ Side storage unit available with or without tambour door
- ▶ Fitted with barrel exchange locks
- ▶ 10-year warranty

Left or Right: The positioning of the drawer unit can be on the left or right to suit your desired layouts or uses.

Sturdy and Strong: The mobile caddy can be fitted with a cushioned seat to be used as a convenient seat in hot-desk applications.

Colours: Various coloured door slats, drawers or carcasses can be applied to our mobile caddy to suit the look you are after.

AFRDI Certified: The Steelco Trimline Mobile Caddy has been Blue Tick AFRDI approved, Reference #13530/1.

The Steelco Trimline Mobile Caddy has been Green Tick AFRDI approved, Reference #13590/4.



TECHNICAL SPECIFICATION

Standard Sizes (mm)

615H x 1050W x 500D

LOCKING MECHANISM

Key Lock
Digital Lock

STOCK COLOURS

■ Black Satin □ White Satin



STEELCO PLAN CABINET

Steelco Plan Cabinets are designed specifically to store and protect plans, drawings, and maps. The drawer size allows for paper up to size A0.

- ▶ Units can be stacked two high
- ▶ Depressor lip within the drawer secures documents
- ▶ 15kg drawer capacity
- ▶ 10 year product warranty

TECHNICAL SPECIFICATION

Standard Sizes (mm)

Standard - 870H x 1375W x 960D

Size Modifications: If our standard sizes do not suit your needs, a customised plan cabinet can be designed and manufactured.

Colours: Various coloured doors or carcasses can be applied to our Plan Cabinet to suit the look you are after.

Without Stand - 628H x 1375W x 960D

STOCK COLOURS

■ Graphite Ripple



STEELCO BOOKCASE

This versatile Steelco Bookcase can be adjusted to suit any storage requirements.

- ▶ Shelves are easily adjustable
- ▶ 40kg shelf capacity
- ▶ Flush side panels for a cleaner finish
- ▶ 10 year warranty

TECHNICAL SPECIFICATION

Standard Sizes (mm)

3 Shelves - 1200H x 900W x 400D
3 Shelves - 1320H x 900W x 400D

Size Modifications: If our standard sizes do not suit your needs, a customised plan cabinet can be designed and manufactured.

Colours: Various coloured doors or carcasses can be applied to our Bookcase to suit the look you are after.

4 Shelves - 2000H x 900W x 400D

STOCK COLOURS

■ Silver Grey

□ White Satin

■ Graphite Ripple



STEELCO TAMBOUR CABINET



Steelco Tambour Cabinets are ideal for office storage needs. With retractable doors and adjustable shelves, you will be able to easily store a variety of office goods. Ideal for workstations, confined spaces, narrow corridors and an array of office environments.

- ▶ Retractable doors
- ▶ Adjustable interior leveling feet
- ▶ 40kg UDL shelf capacity
- ▶ 10-year product warranty

Size Modifications: If our standard sizes do not suit your needs, a customised Tambour Cabinet can be designed and manufactured.

Colours: Various coloured door slats or carcasses can be applied to our Tambour Cabinet to suit the look you are after.

AFRDI Certified: The Steelco Tambour Cabinet has achieved blue tick certification. Certificate#12230/1.

TECHNICAL SPECIFICATION

Standard Sizes (mm)

2 Shelves - 1015H x 900W x 463D
 2 Shelves - 1015H x 1200W x 463D
 3 Shelves - 1200H x 900W x 463D
 3 Shelves - 1200H x 1200W x 463D

3 Shelves - 1320H x 900W x 463D
 3 Shelves - 1320H x 1200W x 463D
 5 Shelves - 2000H x 900W x 463D
 5 Shelves - 2000H x 1200W x 463D

LOCKING MECHANISM

Key Lock (Standard)
 Digital Lock

STOCK COLOURS

■ Silver Grey □ White Satin ■ Black Satin



STEELCO SLIDING DOOR CABINET

Steelco Sliding Door Cabinets are ideal for narrow spaces as the doors do not interfere with walkways. With the option to transform the doors into a glass presentation cabinet, or have sound reducing acoustic doors fitted, there is something for every occasion.

- ▶ Can be used in a walkway or aisle space without causing interference
- ▶ Adjustable interior leveling feet
- ▶ 40kg UDL shelf capacity
- ▶ 10-year product warranty

Size Modifications: If our standard sizes do not suit your needs, a cabinet can be designed and manufactured.

Colours: Various coloured doors or carcasses can be applied to our Cabinet Range to suit the look you are after.

Acoustic or Glass Panels: The Sliding Door Cabinets can be fitted with an acoustic-rated sound-absorbing material to minimise noise disturbances in the workplace, hidden behind a perforated pattern. Glass paneling can also be fitted to the doors for easy visibility of the contents.



TECHNICAL SPECIFICATION

Standard Sizes (mm)

2 Shelves - 1015H x 914W x 465D
3 Shelves - 1830H x 914W x 465D

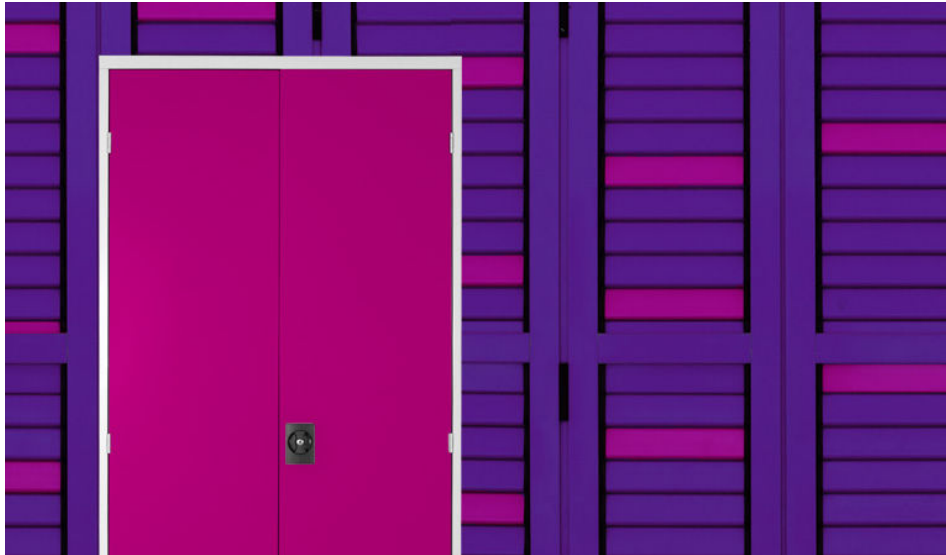
2 Shelves - 1015H x 1500W x 465D
3 Shelves - 1830H x 1500W x 465D

LOCKING MECHANISM

Key Lock (Standard)
Digital Lock

STOCK COLOURS

■ Silver Grey □ White Satin ■ Graphite Ripple



STEELCO STATIONERY CABINET

Steelco Stationery Cabinets feature reinforced doors with a three-point locking system, ideal for storing documents and valuable items. Shelves can be adjusted in height to maximise storage capacity. Storage Cabinets are available in various heights, widths, and configurations.

- ▶ 180-degree opening capability
- ▶ Adjustable interior leveling feet
- ▶ 40kg UDL shelf capacity
- ▶ 10-year product warranty

Size Modifications: If our standard sizes do not suit your needs, a customised stationery cabinet can be designed and manufactured.

Colours: Various coloured doors or carcasses can be applied to our Stationery Cabinet to suit the look you are after.

Acoustic Panels: Our Stationery Cabinets can be fitted with an acoustic-rated sound-absorbing material to minimise noises in the workplace.



TECHNICAL SPECIFICATION

Standard Sizes (mm)

- 2 Shelves - 1015H x 914W x 463D
- 3 Shelves - 1830H x 914W x 463D
- 4 Shelves - 2000H x 914W x 463D

LOCKING MECHANISM

Key Lock (Standard)
Digital Lock

STOCK COLOURS

- Silver Grey
- White Satin
- Graphite Ripple



STEELCO MULTIMEDIA CABINET

Steelco Multimedia Cabinets allow the ability to sort and securely store all your smaller items. Drawer dividers (made to fit CD's and DVD's) are available to provide an organised and structured storage solution.

- ▶ Plastic parts bins can be used for small parts storage
- ▶ Ball-bearing runners
- ▶ Key lock as standard
- ▶ 30kg UDL shelf capacity
- ▶ Quality powder coated finish
- ▶ 10-year product warranty

Size Modifications: If our standard sizes do not suit your needs, a customised stationery cabinet can be designed and manufactured.

Colours: Various coloured doors or carcasses can be applied to our Multimedia Cabinet to suit the look you are after.



TECHNICAL SPECIFICATION

Standard Sizes (mm)

7 Drawers - 1320H x 790W x 620D
10 Drawers - 1370H x 710W x 620D

LOCKING MECHANISM

Key Lock (Standard)
Digital Lock

STOCK COLOURS

■ Silver Grey ■ Graphite Ripple



STEELCO ANGUS WORKSTATION NEW

Create a modern office partitioning system using the Angus Range of free-standing screen dividers. Partitions, tabletops, and sofas can all be colour customised to meet specific design needs.

- ▶ Modular Design
- ▶ Features open and semi-open workspace options
- ▶ E1-grade environmental particle board
- ▶ Access space for office pedestal

Modular Design: The modular workstation design allows for a variety of varying sections, colours and designs to create a custom arrangement to suit your space and needs.

Desk Screen: Optional fabric covered desk screens offer some privacy and adds a pop of colour.

Wire Box: With a sleek ABS plastic design, the wire box gives users direct access to cable ports to plug-in devices.

Metal Cable Tray: Affixed underneath the workstation, the cable tray cleans up any workspace by allowing the organisation of cables under the desk.

TECHNICAL SPECIFICATION

Standard Sizes (mm)

Partition Workstation 1	3692L x 2902W x 1200H
Partition Workstation 2	3692L x 2930W x 1200H
Partition Workstation 3	3692L x 2930W x 1200H
Space Partition 1	2136L x 1259W x 1400H
Space Partition 2	1200L x 420W x 1050H
	1200L x 420W x 1250H

Single Workstation 1200L x 600W x 750H Bespoke sizes available on request

STANDARD COLOURS AVAILABLE (10-12 Week Lead Time)

Bespoke colours available on request - please contact your local Business Development Manager

(Worktop)

■ Black ☐ White

■ Natural Birch ☐ Natural Oak

(Steel Beam / Steel Legs)

■ Black ☐ White



STEELCO **AQUINO WORKSTATION** NEW

The Aquino Workstation Range features an eye-catching design with a stylish 45-degree feet connection that can be configured to seat between 2 and 6 people. With a wide range of size and colour options to create a unique layout suited to your space.

- ▶ Suitable for up to 6 people
- ▶ Uniquely shaped legs
- ▶ More than 25 screen divider colours
- ▶ E1 grade environmental particle board
- ▶ Access space for office pedestal

Unique Style: The eye-catching design of the Aquino workstation features solid steel legs with a clean 45-degree connection.

Desk Screen: Optional fabric covered desk screens offer some privacy and adds a pop of colour.

Wire Box: With a sleek ABS plastic design, the wire box gives users direct access to cable ports to plug-in devices.

Metal Cable Tray: Affixed underneath the workstation, the cable tray cleans up any workspace by allowing the organisation of cables under the desk.

TECHNICAL SPECIFICATION

Standard Sizes (mm)

2 Person	750H x 1200W x 1250D / 750H x 1400W x 1450D
4 Person	750H x 2400W x 1250D / 750H x 2800W x 1450D
6 Person	750H x 3600W x 1250D / 750H x 4200W x 1450D
Single	1200L x 600W x 750H <small>Bespoke sizes available on request</small>

Workstation

Additional designs and sizes are available*

STANDARD COLOURS AVAILABLE (10-12 Week Lead Time)

Bespoke colours available on request - please contact your local Business Development Manager

(Worktop)

☒ Black ☐ White

☒ Natural Birch ☐ Natural Oak

(Steel Beam / Steel Legs)

☒ Black ☐ White



STEELCO CAPIZZI WORKSTATION NEW

With a sleek, modern look, the Capizzi Range features angular solid legs and a two-colour desktop. With over 25 desk screen colours available, the Capizzi Range is a functional and clean addition to any office environment.

- ▶ Suitable for up to 6 people
- ▶ Uniquely shaped angular legs
- ▶ More than 25 screen divider colours
- ▶ E1 grade environmental particle board
- ▶ Access space for office pedestal

Unique Style: The eye-catching design of the Capizzi workstation features solid steel legs with a clean angular connection.

Desk Screen: Optional fabric covered desk screens offer some privacy and add a pop of colour.

Wire Box: With a sleek ABS plastic design, the wire box gives users direct access to cable ports to plug-in devices.

Metal Cable Tray: Affixed underneath the workstation, the cable tray cleans up any workspace by allowing the organisation of cables under the desk.

TECHNICAL SPECIFICATION

Standard Sizes (mm)

2 Person	750H x 1200W x 1200D / 750H x 1400W x 1400D
4 Person	750H x 2400W x 1200D / 750H x 2800W x 1400D
6 Person	750H x 3600W x 1200D / 750H x 4200W x 1400D
Single	1200L x 600W x 750H <small>Bespoke sizes available on request</small>

Workstation

Additional designs and sizes are available*

STANDARD COLOURS AVAILABLE (10-12 Week Lead Time)

Bespoke colours available on request - please contact your local Business Development Manager

(Worktop)

<input checked="" type="checkbox"/> Black	<input type="checkbox"/> White
<input checked="" type="checkbox"/> Natural Birch	<input type="checkbox"/> Natural Oak

(Steel Beam / Steel Legs)

<input checked="" type="checkbox"/> Black	<input type="checkbox"/> White
---	--------------------------------



STEELCO FANO WORKSTATION NEW

The Fano Workstation has a modern style that gives a workplace a clean and contemporary look. With the distinctive squared legs and glass desk screen with customisable colour detailing, the Fano Workstation is a suitable addition to any workplace.

- ▶ Suitable for up to 6 people
- ▶ Uniquely shaped squared legs
- ▶ Glass desk screen
- ▶ E1 grade environmental particle board
- ▶ Access space for office pedestal

Unique Style: The distinctive and unique squared legs in combinations with the clean glass desk screen makes the Fano Workstation a boldly unique addition to any workplace.

Desk Screen: Optional fabric covered desk screens offer some privacy and adds a pop of colour.

Wire Box: With a sleek ABS plastic design, the wire box gives users direct access to cable ports to plug-in devices.

Metal Cable Tray: Affixed underneath the workstation, the cable tray cleans up any workspace by allowing the organisation of cables under the desk.

TECHNICAL SPECIFICATION

Standard Sizes (mm)

2 Person	750H x 1200W x 1200D / 750H x 1400W x 1400D
4 Person	750H x 2400W x 1200D / 750H x 2800W x 1400D
6 Person	750H x 3600W x 1200D / 750H x 4200W x 1400D
Single	1200L x 600W x 750H <small>Bespoke sizes available on request</small>

Workstation

Additional designs and sizes are available*

STANDARD COLOURS AVAILABLE (10-12 Week Lead Time)

Bespoke colours available on request - please contact your local Business Development Manager

(Worktop)

☒ Black ☐ White

☒ Natural Birch ☐ Natural Oak

(Steel Beam / Steel Legs)

☒ Black ☐ White



STEELCO NORBA WORKSTATION NEW

The Norba Range is a highly versatile modern workstation. With a clean aesthetic featuring angular legs and a wide range of layout and storage options available, the Norba Workstation has an option to fulfill your needs.

- ▶ Suitable for up to 6 people
- ▶ Uniquely shaped angular legs
- ▶ More than 25 screen divider colours
- ▶ E1 grade environmental particle board
- ▶ Access space for office pedestal

Unique Style: The distinctive and unique angular legs and coloured desk screen makes the Norba Workstation a customisable and unique addition to any workplace.

Desk Screen: Optional fabric covered desk screens offer some privacy and adds a pop of colour.

Wire Box: With a sleek ABS plastic design, the wire box gives users direct access to cable ports to plug-in devices.

Metal Cable Tray: Affixed underneath the workstation, the cable tray cleans up any workspace by allowing the organisation of cables under the desk.

TECHNICAL SPECIFICATION

Standard Sizes (mm)

2 Person	750H x 1200W x 1200D / 750H x 1400W x 1400D
4 Person	750H x 2400W x 1200D / 750H x 2800W x 1400D
6 Person	750H x 3600W x 1200D / 750H x 4200W x 1400D
Single	1200L x 600W x 750H <small>Bespoke sizes available on request</small>

Workstation

Additional designs and sizes are available*

STANDARD COLOURS AVAILABLE (10-12 Week Lead Time)

Bespoke colours available on request - please contact your local Business Development Manager

(Worktop)

☒ Black ☐ White

☒ Natural Birch ☐ Natural Oak

(Steel Beam / Steel Legs)

☒ Black ☐ White



STEELCO PADRIA WORKSTATION NEW

With a clean and minimal design, the Padria Range is an on-trend collection suitable for any workspace. Available in a variety of configurations, styles and colour combinations so you can find the perfect fit for your office.

- ▶ Suitable for up to 6 people
- ▶ Perfect for team collaboration
- ▶ More than 25 screen divider colours
- ▶ E1 grade environmental particle board
- ▶ Access space for office pedestal

Desk Screen: Optional fabric covered desk screens offer some privacy and adds a pop of colour.

Wire Box: With a sleek ABS plastic design, the wire box gives users direct access to cable ports to plug-in devices.

Metal Cable Tray: Affixed underneath the workstation, the cable tray cleans up any workspace by allowing the organisation of cables under the desk.

TECHNICAL SPECIFICATION

Standard Sizes (mm)

2 Person	750H x 1200W x 1200D / 750H x 1400W x 1400D
4 Person	750H x 2400W x 1200D / 750H x 2800W x 1400D
6 Person	750H x 3600W x 1200D / 750H x 4200W x 1400D
Single	1200L x 600W x 750H <small>Bespoke sizes available on request</small>

Workstation

Additional designs and sizes are available*

STANDARD COLOURS AVAILABLE (10-12 Week Lead Time)

Bespoke colours available on request - please contact your local Business Development Manager

(Worktop)

☒ Black ☐ White

☒ Natural Birch ☐ Natural Oak

(Steel Beam / Steel Legs)

☒ Black ☐ White



STEELCO VISITOR CHAIRS

Work for longer in comfort with the right office chair. Perfect for a wide variety of situations, with the option for colour customisation, our chair range is ideal for the commercial, educational and healthcare environments.

- ▶ Lightweight Design
- ▶ Linking tips fitted to sled base
- ▶ 110kg BIFMA Accreditation
- ▶ Easily stacked and moved
- ▶ 5-year warranty

Comfortable Padding: Optional fabric cushions can be added to the chairs to provide additional comfort.

Sturdy and Strong: The chairs have all been independently accredited by BIFMA to safely support 110kg.

Colours: Various coloured fabrics and plastics can be applied to our chair range to suit the look you are after.

AFRDI Certified: Steelco Adam Chairs have been Blue Tick AFRDI approved, Reference # 14809/1.

Steelco Ace Chairs have been Blue Tick AFRDI approved, Reference# 13073/1.



TECHNICAL SPECIFICATION

Standard Sizes (mm)

830H x 540W x 570D

CHAIR DESIGNS

Ace Chair
Adam Chair
Curve Chair

STOCK COLOURS

■ Black





STEELCO PADOVA CHAIR RANGE NEW

The Steelco Padova Executive Chair range is a sleek, modern design seating solution, suitable for any office environment. It is also an ideal option for a Home Office set up, offering all day comfort.

- ▶ Mesh Back Support
- ▶ Fabric Finish Foam Seat
- ▶ Aluminum Base
- ▶ Soft PU Arms
- ▶ 110kg Weight Capacity (Executive)
- ▶ 100kg Weight Capacity (Visitor)
- ▶ Nylon Frame
- ▶ 5-Year Warranty

Comfortable Mesh Back: Soft mesh back support offers all day comfort.

Sturdy and Strong: Padova Executive chairs have all been independently accredited by BIFMA to safely support 110kg.

Colours: With a range of different Padova Chairs available, it is possible to select the perfect model for your requirements. Chairs can also be customised, with a range of optional colours available.



TECHNICAL SPECIFICATION

Standard Sizes (mm)

Executive Chair - 93-103H x 68.5W x 57D

Visitor Chair - 96.5H x 68.5W x 57D

CHAIR DESIGNS

Padova Executive Chair - No Arms
Padova Executive Chair
Padova Visitor Chair

STOCK COLOURS

■ Black



STEELCO ANGUS PUBLIC SOFA NEW

The Steelco Angus Public Sofa is a contemporary public sofa, built from business grade materials and is designed to compliment any business or private space that requires seating.

- ▶ Single and Double Sided Models
- ▶ Business Grade Design
- ▶ Built in Table
- ▶ High Density Foam for Heavy Use
- ▶ Reinforced Fabric
- ▶ 5-Year Warranty

Modern Styled Seating Solution:

Designed to fit seamlessly into any modern business space that requires seating.

Sturdy and Strong: Built with high-density foam offering long lasting comfort for heavy-use spaces and reinforced fabric to protect from tears.

Colours: The Angus Public Soda can also be customised, with a range of optional colours available.

TECHNICAL SPECIFICATION

Standard Sizes (mm)

Single Sofa - 720H x 690W x 2100D

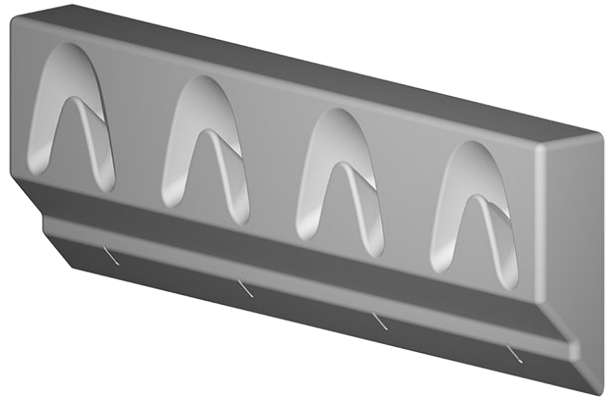
Twin Sofa - 720H x 1380W x 2960D

CHAIR DESIGNS

Single Sided Public Sofa
Double Sided 'Twin' Public Sofa

COLOURS AVAILABLE

Please contact your local sales representative for more information.



SNUGHOOKS

Snughooks represent the latest and safest hook on the market. Snughooks are smooth-faced, recessed hooks; eliminating the dangers associated with protruding wall hooks. Snughooks are ideal for educational institutes and public areas and can be used to store items such as school bags, minimising potential trip hazards.

- ▶ No protruding hook
- ▶ No sharp edges
- ▶ Australian owned, designed and made
- ▶ Flame retardant
- ▶ UV stabilised
- ▶ Wall fixing kit included
- ▶ 10-year product warranty

Safe: With no protruding hooks or sharp edges the Snughook is one of the safest hook systems on the market.

Strong: Snughooks have been built to last. Flame retardant, UV stabilised and rated to support a combined load of 120kg.

TECHNICAL SPECIFICATION

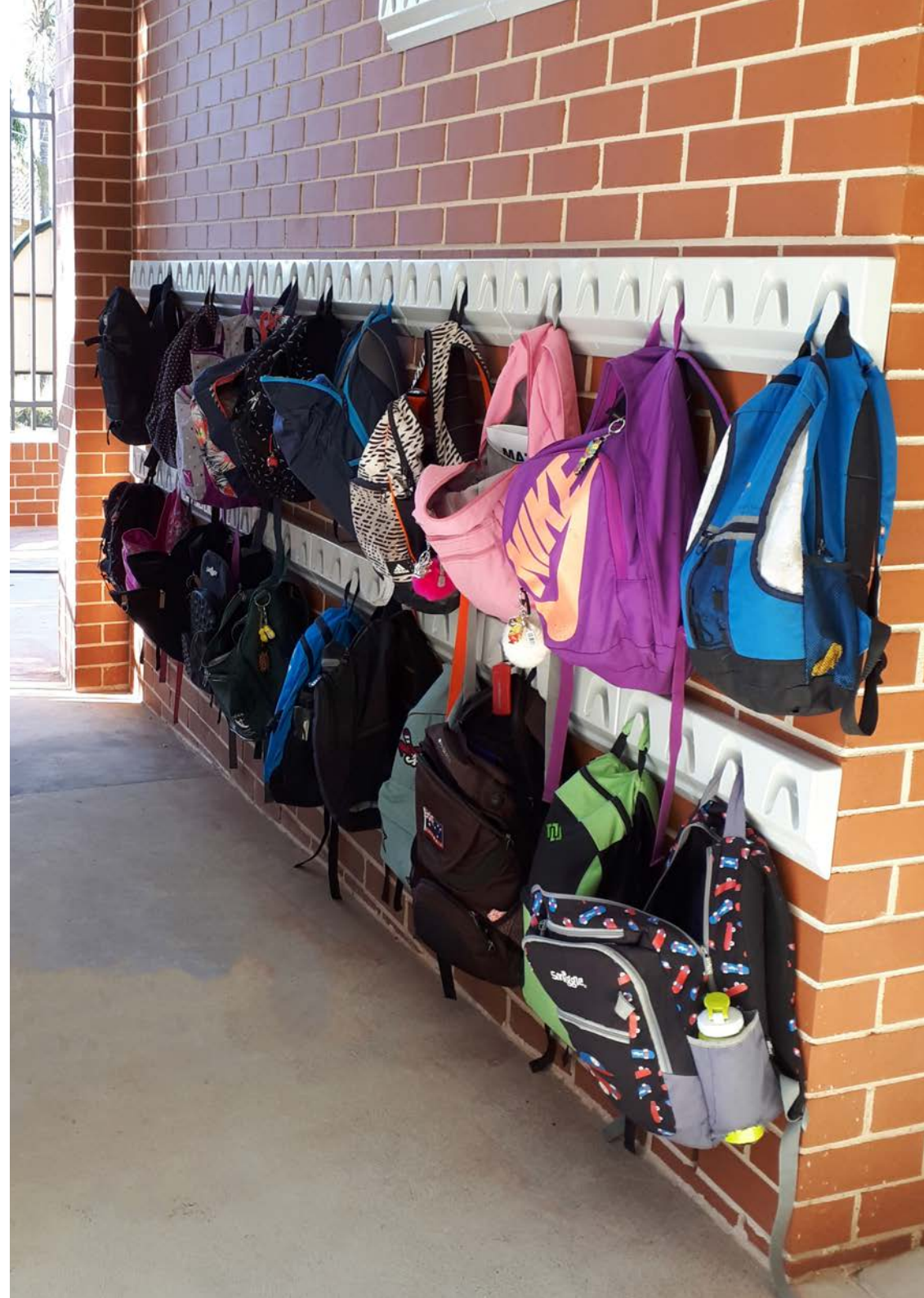
Standard Sizes (mm)

167H x 480W x 45D

STOCK COLOURS

☐ White ☒ Black

☐ Grey





STEELCO WIRE SHELVING

This lightweight shelving system is ideal for storing archive boxes or products that require easy access.

- ▶ 150kg shelf capacity
- ▶ 5 Shelves included with each unit
- ▶ Adjustable feet for uneven floors
- ▶ Quick and easy to assemble due to its bolt-less design

TECHNICAL SPECIFICATION

Standard Sizes (mm)

1800H x 900W x 450D - 5 Shelves
1800H x 1200W x 450D - 5 Shelves

Size Modifications: If our standard sizes do not suit your needs, customised wire shelving can be designed and manufactured.

Bolt-less design: This unit can be put together and modified extremely fast as it has a bolt-less design.

1800H x 1500W x 450D - 5 Shelves

STOCK COLOURS

■ Chrome □ White Satin ■ Black Satin



UNI-SHELF®

Uni-Shelving® is a versatile storage system that can be easily added to or reconfigured, ideal for the growing business. This modular system can be made mobile with the addition of Aislesaver runners and bases. Uni-Shelving® bays are available in various height and width configurations.

- ▶ Modular Design
- ▶ Shelf height adjustable
- ▶ Australian Made
- ▶ 100kg Shelf Capacity (UDL)
- ▶ Easy to add on extra bays

TECHNICAL SPECIFICATION

Standard Sizes (mm)

2175H x 900W x 400D
2175H x 1200W x 400D

STOCK COLOURS

■ Cyber Grey □ White Satin



AISLESAVER®

The Aislesaver (Mobile Shelving System) is a uniquely designed system that can be customised to suit any high-density storage requirement. The system is fitted with a discreet anti-tilt system for operator safety. Units are available in single or tandem bay widths.

- ▶ Key or Digital locking option
- ▶ Option for manual (push-pull) or mechanical (drive) system
- ▶ 75kg shelf capacity (UDL)
- ▶ Adjustable shelves (25mm)

Size Modifications: If our standard sizes do not suit your needs, a customised shelving unit can be designed and manufactured.

Australian Made: Manufactured in Perth using Australian Bluescope steel, we can provide high-quality shelving, with a quick turn around.

Acoustic Panels: Our Aislesaver® can be fitted with an acoustic-rated sound-absorbing material to minimise noises in the office.

TECHNICAL SPECIFICATION

Standard Sizes (mm)

Height	1875	2175	2375	
Width	750	900	1000	1200
Depth	300	400	450	600

SYSTEM TYPE

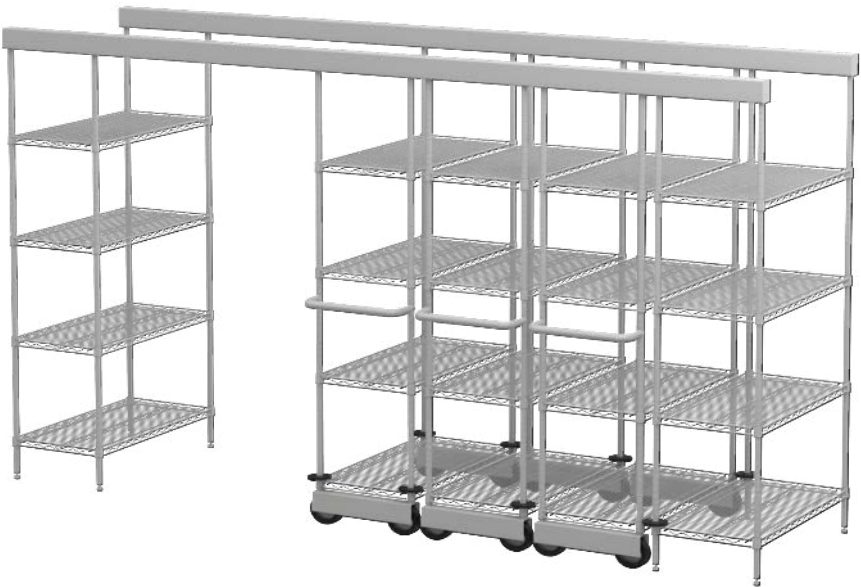
Mechanical - Ezi Drive Manual - Ezi Slide Electronic - TouchDrive

COMPLIANCE

Our Aislesaver® has been tested and designed in accordance with the relevant Australian standards and practices for steel shelving from The Australian Steel Institute, Standards Australia, SEMA and European Federation of Materials Handling Associations. For further information about which standards applies, contact your local sales representative.

STOCK COLOURS

■ Cyber Grey □ White Satin



TOP TRACK® NEW

The Top-Track® mobile wire shelving system utilises an overhead track, making it ideal for areas where it is difficult to incorporate a floor operated mobile shelving system. This lightweight wire shelving system is ideal if airflow and durability are important for your storage needs.

- ▶ Overhead track system
- ▶ Minimises hazards
- ▶ Easy to add more bays
- ▶ Simple to operate
- ▶ Shelving height adjustable

Size Modifications: Custom-sized wire shelving can be designed and manufactured to suit any specific uses.

Strength: Using the collar sleeve mechanism to deliver high weight capacities (150kg per shelf (static) and 60kg per shelf (mobile)).

Colour Customisation: Individual units and even individual shelf levels can be different colours if required.

Accessories: We offer a wide range of accessories to enhance the functionality of the Top-Track® system.

TECHNICAL SPECIFICATION

Standard Sizes (mm)

Height	2170			
Width	900	1200	1500	1800
Depth	450	600		

PRODUCT FINISH

Stainless Steel
 Chrome Plated
 Powdercoated Finish
 Aint-Microbial Finish

RECENT PROJECTS



HEAVY DUTY PLASTIC LOCKERS
Point Cook College



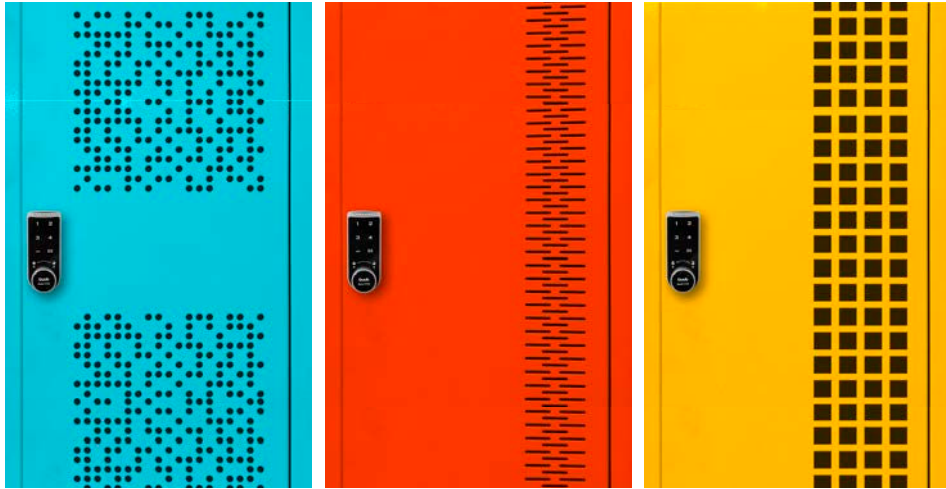
CUSTOM LAB CABINETS
The University of Sydney



EZI-DRIVE AISLESAVER®
Powerhouse Museum



OFFICE FITOUT
DHS, Perth Office



PRODUCT CUSTOMISATION

We know that sometimes standard products are not enough. To best serve our client's particular requirements, whilst providing furniture that can make every environment unique we encourage a customised approach to our product range. Just some of the modifications we provide are:

Size Modifications: Custom-sized products can be designed and manufactured to suit specific uses.

Perforation Patterns: Unique patterns can be designed to set your office apart from the rest.

Special Requirements: We can design customised products, to suit specific requirements, ensuring you get a product best suited to your needs.

Colours: Adding the correct colour to your environment is important in establishing the right look and feel to your workspace. Ask your local sales representative about our additional custom colour options.



AFTER SALES SERVICE

Customer satisfaction is an imperative component of the comprehensive service that we provide. We strive to meet objectives and deliver products and services to meet our customer's needs.

We also endeavour to provide a better product and ongoing service, to do this we follow our ISO 9001:2015 certified quality management system.

CONTACT US

Have some questions for our team? Contact us using your preferred method from the details below.

Phone: 1300 202 557

Email: sales@premier-lockers.com

(Visits By Appointment Only)

6 Foundry Road, Seven Hills, NSW, 2147

85 Proximity Drive, Sunshine West, VIC, 3020

58 Mica Street, Carole Park, QLD, 4300

4 Hanwell Way, Bassendean, WA, 6054

27 Beafield Road, Para Hills West, SA, 5096



AUSTRALIA'S LOCKER SPECIALIST

1300 202 557
SALES@PREMIER-LOCKERS.COM
WWW.PREMIER-LOCKERS.COM