

# PREMIER LOCKERS

AUSTRALIA'S LOCKER SPECIALIST



## HEAVY-DUTY WATERPROOF LOCKER

The ultimate outdoor locker. These Heavy Duty Waterproof Plastic Lockers are designed to suit most conditions, being water, UV and vandal proof. They are the perfect locker solution for any outdoor use in a school, fitness centre, or swimming pools.

### FEATURES

- ▶ Doors are available in a variety of configurations
- ▶ Waterproof\*
- ▶ UV Proof
- ▶ Vandal Proof
- ▶ Easy to clean
- ▶ Low Maintenance
- ▶ Multiple locking options
- ▶ Eco friendly/recyclable
- ▶ 20-year warranty

\*Lockers are waterproof in standard outdoor conditions. In adverse weather conditions, resulting in flooding or the units being submerged in water, the lockers will leak water. Please discuss this with your local BDM for further advice and recommendations.

### TECHNICAL SPECIFICATIONS

CODE	DESCRIPTION	DIMENSIONS
-	Half Height Locker	910H x 390W x 500D (990H with 80mm base)
-	Third Height Locker	610H x 390W x 500D (690H with 80mm base)
-	Quater Height Locker	460H x 390W x 500D (540H with 80mm base)

WWW.PREMIER-LOCKERS.COM  
1300-202-557  
SALES@PREMIER-LOCKERS.COM



**COLOURS AVAILABLE (10-12 WEEK LEAD TIME)**

Door unit colours can be customised to suit a certain theme or create an interesting design element.

**Carcass:**



**Doors:**

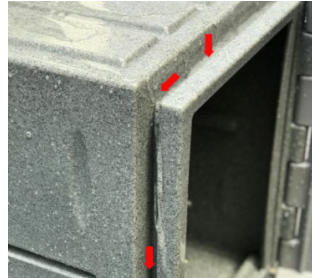


Custom colours available on request, contact your local sales representative for more information.

**WATERPROOFING**



**Sealed Door**  
The locker door fully covers the locker carcass, which effectively enhances the waterproof performance.

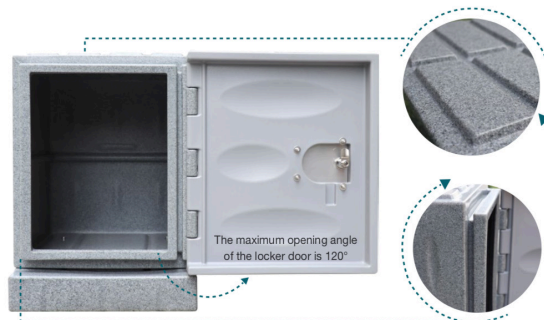
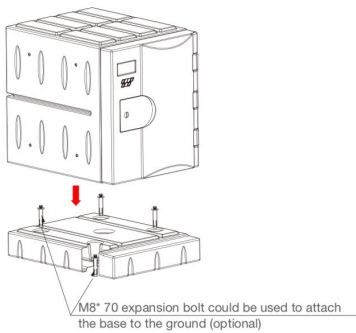


**Water Strip**  
This waterproof locker is designed with a water strip which captures water and allows it to drain.



**Water Strip Design**  
The water strip prevents rain water from entering into the locker.

*Schematic diagram with ground*



**WWW.PREMIER-LOCKERS.COM**  
**1300-202-557**  
**SALES@PREMIER-LOCKERS.COM**

## STANDARD LOCK OPTIONS

---

We have a wide variety of lock options to choose from, with varying features and locker compatibility. To discuss which locks would best suit your needs and your locker of preference, contact your local sales representative.



1. Key Lock
2. Pad-latch Lock

## ACCESSORIES

---

**A range of optional accessories to increase the lockers functionality.**

- Sloping Top
- Locker Stand
- Hanging Rail
- Plinths
- Locker Bench
- Locker Numbering
- Shelf
- Clothes Hook

## PRODUCT CUSTOMISATION

---

We focus on delivering products to our customers that meet their specific requirements. As a result of our manufacturing capabilities, if you're looking for a custom size, colour or product, chances are we can do it! Contact your local sales representative for more information.